

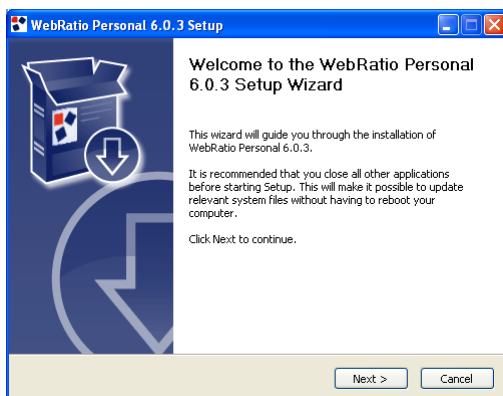
# WebRatio Personal 6 Installation Guide

---

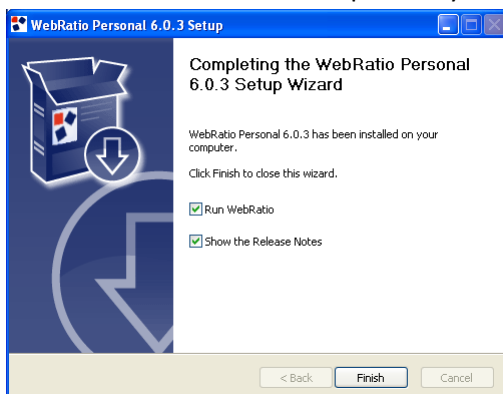
## Installation steps

**Prerequisite:** in order to install WebRatio Personal, **Java** must be installed in your environment. You can download the latest version from: [www.java.com](http://www.java.com)

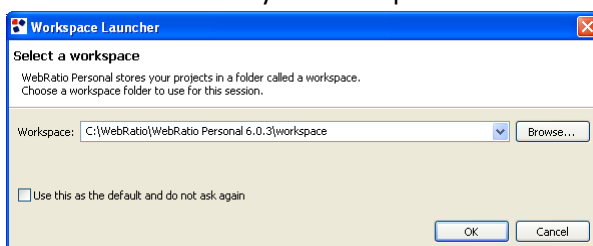
1. Launch the installation file and leave all the default options.



2. At the end of the installation process you can immediately run WebRatio Personal.



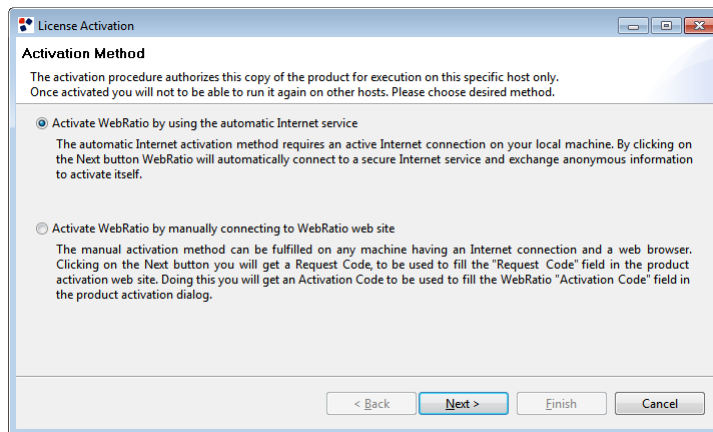
3. Starting from now, you will find WebRatio BPM in your Start Menu (Start Menu -> WebRatio -> WebRatio Personal 6.0.3 -> WebRatio Personal).
4. Confirm the folder of your workspace.



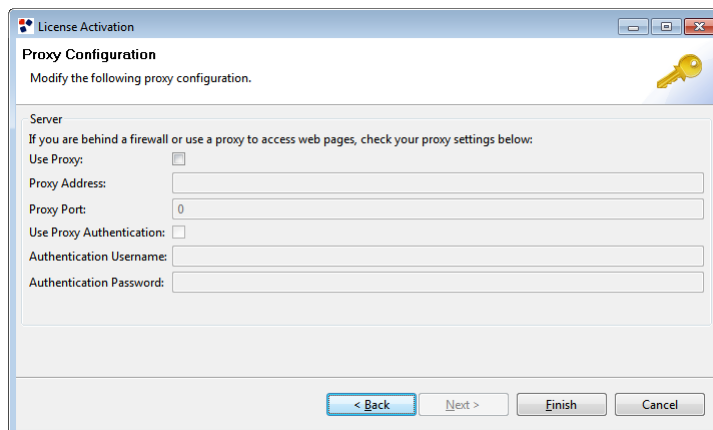
5. The activation splash screen appears. Provide your username and password. If you are a new WebRatio user follow the link that let you register and get a new username and password.



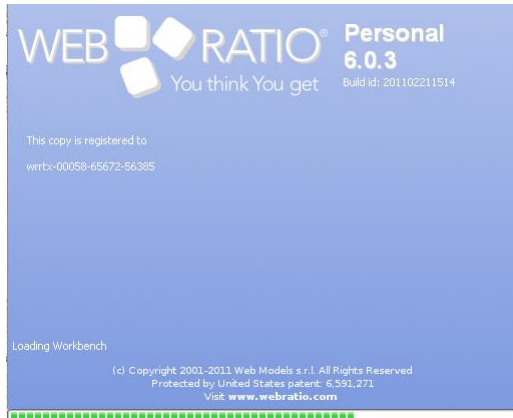
6. The License Activation dialog appears. Choose "Activate WebRatio by using automatic Internet service" (you must be connected to the Internet in order to complete this operation).



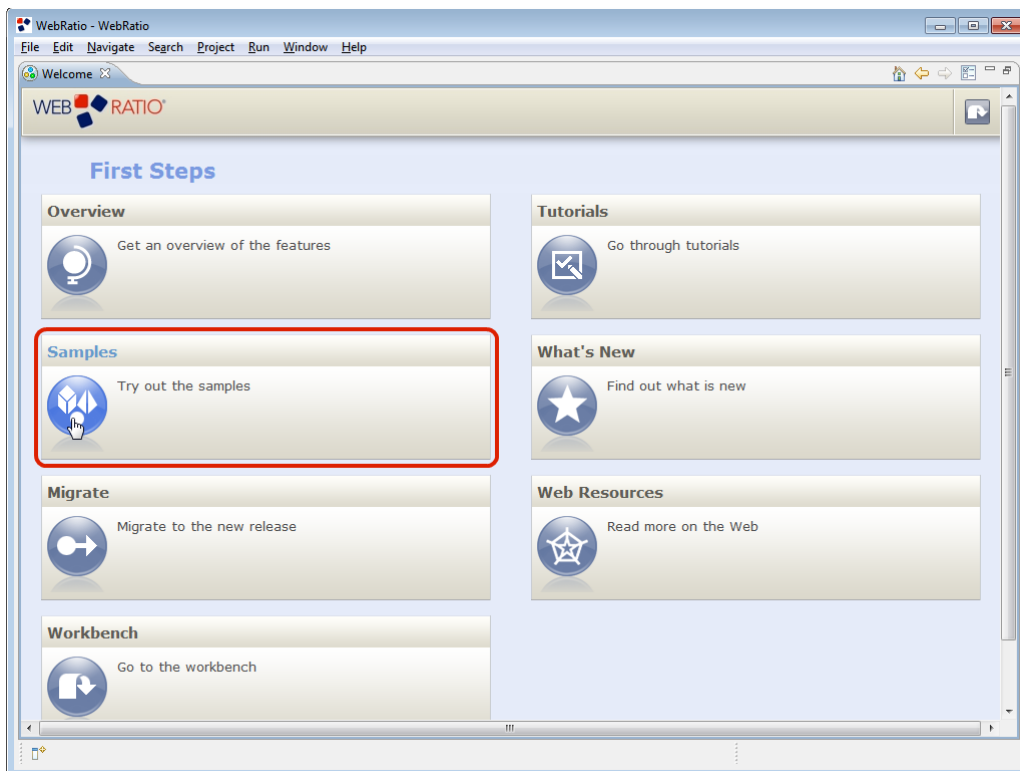
7. The Proxy Configuration dialog appears. In most cases leave the default options. If you need specific proxy configuration, then choose "Use Proxy" and set all the parameters.



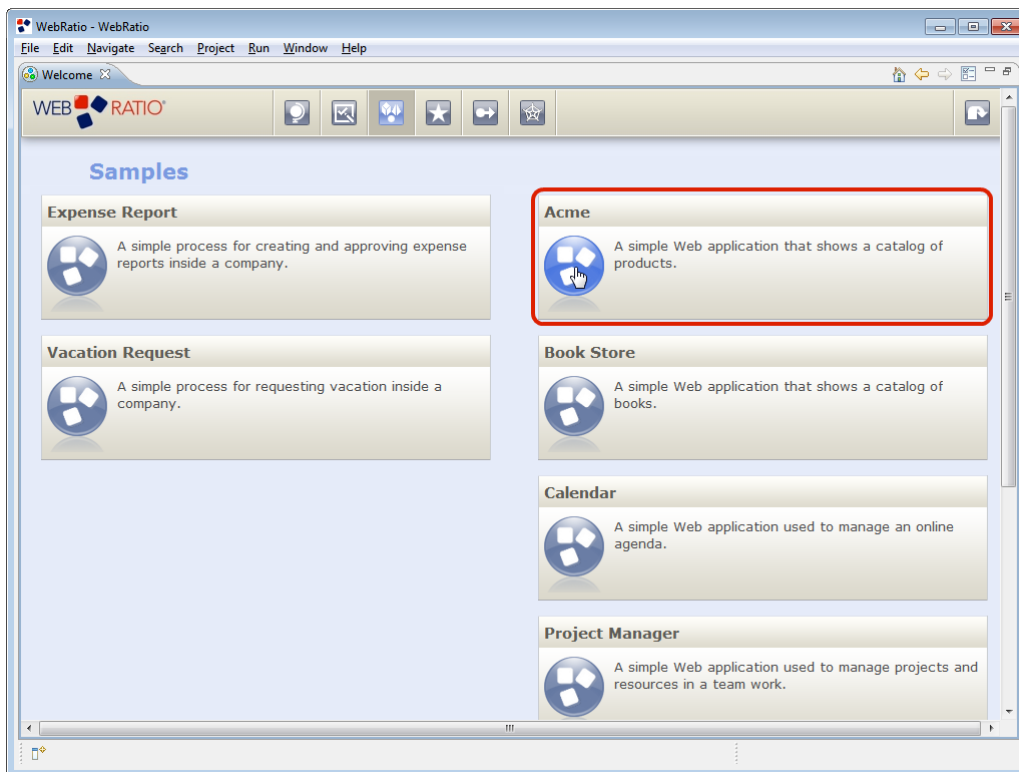
8. Your copy of WebRatio Personal is now activated.



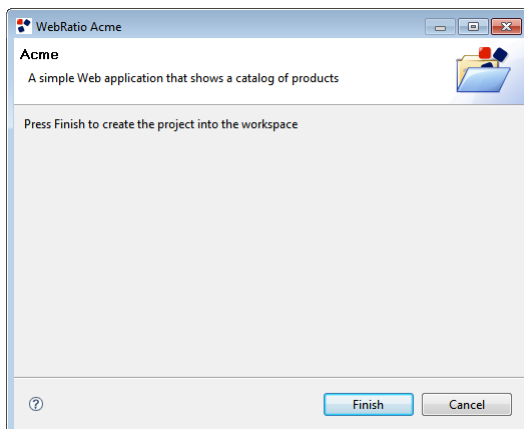
9. The Welcome page appears. Click the "Try out the samples" button.



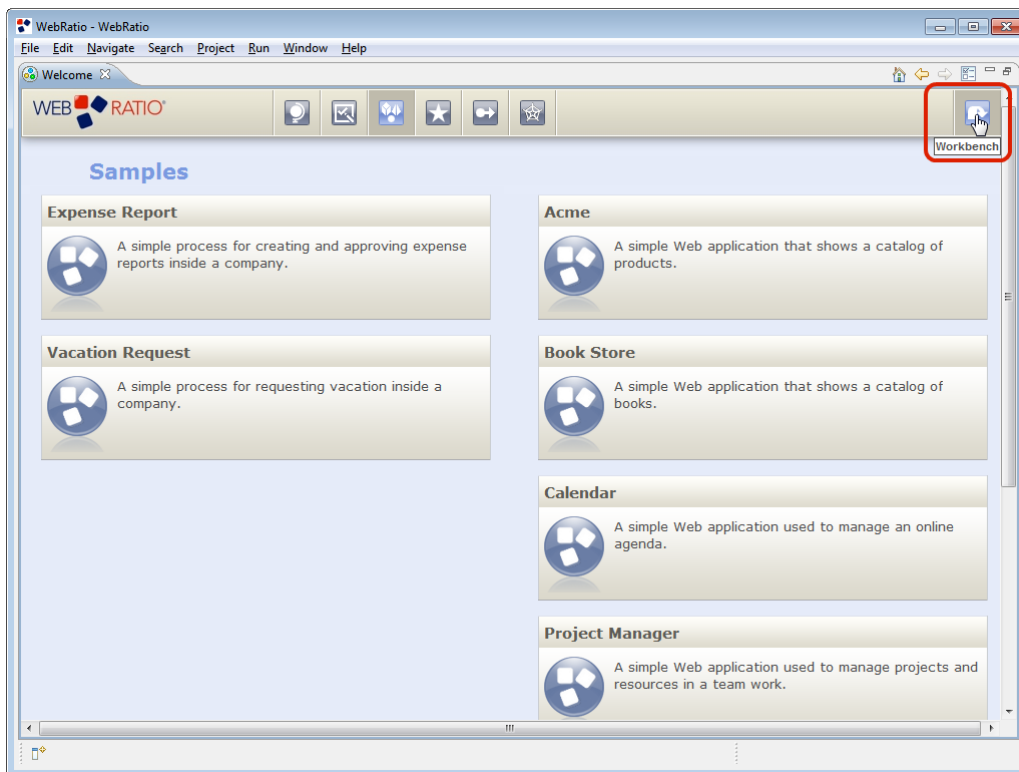
10. Choose the “Acme” example.



11. Confirm the creation of the sample project in your workspace.



## 12. Go to the Workbench



## 13. You can now work with WebRatio Personal. Enjoy it!

